

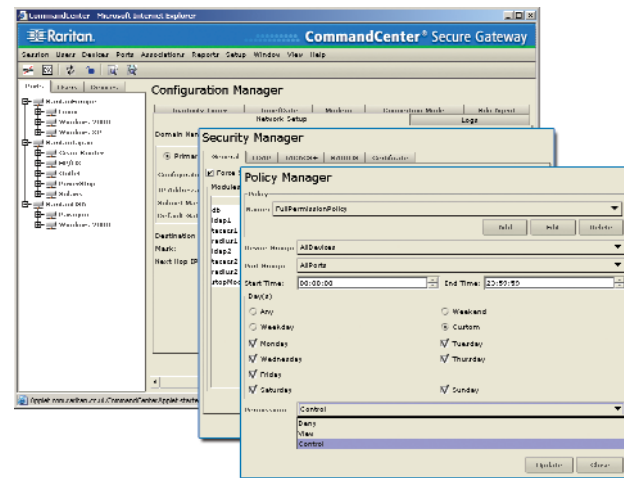
## Specifications



CommandCenter Secure Gateway

Form Factor	1U
Dimensions (DxWxH)	563 x 440 x 44mm
Weight	10.92kg
Power	Redundant, hot-swappable power supplies auto sensing 110/220 V – 2.0A
KVM Admin Port	1
Serial Admin Port	1
Operating temperature	0°-40°C
<b>Hardware</b>	
Processor	Intel® Pentium® III 1 GHz
RAM	512 MB Error Checking and Correcting (ECC) memory
Ethernet Interfaces	Two 10/100 Ethernet network interface controllers
Hard Disk & Controller	ATA RAID-1 card with 2 40-GB ATA drives
CD-ROM drive	Slot-load 40x read-only
Console	DB-9 RS232 console port
<b>Remote Connection</b>	
Network	10/100 Ethernet (RJ45)
Modem	V.92 (56Kbps); RJ-11 connector
Protocols	TCP/IP, UDP, RADIUS, LDAP, TACACS+, SNMP, SNT, HTTP, HTTPS
<b>Warranty</b>	<b>Two years.</b> In addition Raritan offers two years Extended Warranty

## One View of the Entire Enterprise



## Access and control at anytime from anywhere

- ▶ Intuitive Graphical User Interface (GUI) providing user-defined physical and logical views of ports, users and devices
- ▶ Comprehensive solution with integration of Raritan's Dominion Series, Paragon and IP-Reach appliances
- ▶ Active Directory, LDAP, RADIUS, TACACS+ and internal authentication
- ▶ Array of flexible logging and reporting options with audit trails for diagnostics and troubleshooting
- ▶ Real-time view and management of active user sessions and active ports



## CommandCenter Secure Gateway

Centralize command of global IT equipment.

## Command and Control of Your IT Enterprise

### Secure, Centralized IT Infrastructure Management

Managing an IT infrastructure is complex, time consuming, expensive and critical to a company's success. Clearly, for IT managers, the pressure is on. Not only must IT managers be more responsive to changing needs while reducing downtime and increasing security; all this must be accomplished while reducing costs.

It's a challenge. At Raritan, we've engineered the CommandCenter family of command and control solutions to help IT managers meet this challenge by combining the speed of remote KVM and serial access with the power of sophisticated network and systems management functionality. CommandCenter Secure Gateway provides centralized access and control of all IT devices. CommandCenter NOC is a comprehensive solution that provides robust infrastructure and security management capabilities.

CommandCenter Secure Gateway consolidates the management of Raritan's Dominion® Series, Paragon and IP-Reach® appliances, and all of the servers and other IT devices connected to Raritan equipment, as well as HP servers with iLO/RILOE devices. With CommandCenter Secure Gateway, a single sign-on to a single interface gives IT administrators a consolidated view, click-and-control access and BIOS-level control, whether they're at the rack, at their desks, in the network operations center or anywhere in the world.

Ideal for any business with midsize to large data centers or a number of remote offices, CommandCenter Secure Gateway features include:

- ▶ Intuitive dashboard views, a single unified GUI with both physical and logical views of all IT assets
- ▶ The ability to monitor, diagnose and resolve infrastructure problems using a browser, from anywhere at anytime
- ▶ Centralized, role-based policy management
- ▶ Comprehensive reporting to create customized reports on device and user data
- ▶ Secure, centralized management of multiple data centers, branch offices and remote locations via one, secure management software platform

The powerful combination of these features gives you the ability to dramatically:

- ▶ Reduce complexity through aggregated access and user-defined logical views
- ▶ Reduce mean time to repair (MTTR) and downtime through reduced complexity combined with remote, BIOS-level access
- ▶ Reduce Total Cost of Ownership (TCO) by streamlining overall operations, administration and maintenance (OA&M)

## When you're ready to take control, do it with CommandCenter Secure Gateway.

Call +31-10-2844040 or visit [Raritan.info](http://Raritan.info)

©2005 Raritan Computer, Inc. Raritan is a registered trademark of Raritan Computer, Inc.; Dominion, IP-Reach and CommandCenter are registered trademarks of Raritan Computer, Inc.; Sun is a registered trademark of Sun Microsystems, Inc.; Active Directory and Windows are registered trademarks of Microsoft Corp.; Intel is a registered trademark of Intel Corporation; Linux is a registered trademark of Linus Torvalds; Mozilla is a trademark of Mozilla Organization; Mac is a registered trademark of Apple Computer, Inc.; Novell is a registered trademark of Novell, Inc.; UNIX is a registered trademark of UNIX System Laboratories, Inc.; PS/2 is a registered trademark of IBM Corporation.

Raritan is a leading supplier of solutions for managing IT infrastructure equipment and the mission-critical applications and services that run on it. Raritan was founded in 1985, and since then has been making products that are used to control millions of servers at more than 50,000 network data centers, computer test labs and multi-workstation environments around the world. From the small business to the enterprise, Raritan's complete line of compatible and scalable KVM and remote connectivity products offers IT professionals the most reliable, flexible and secure in-band and out-of-band solutions to manage data center equipment applications and services, while improving operational productivity. More information on the company is available at [Raritan.com](http://Raritan.com).

## A New Dimension in IT Management

### Centralized IT management for the enterprise

- Secure, single point of access for managing Raritan Dominion KX/SX/KSX, Paragon II, IP-Reach and Remote Power Control devices
- Single sign-on to HP Integrated Lights-Out/Remote Insight Lights-Out Edition devices
- Integrated access to CommandCenter NOC

### Robust security

- Powerful policy management tool allows access and control based on a broad range of criteria, including time of day, location, application, operating system, department and function

- 128-bit SSL encryption for all keyboard, video and mouse traffic
- Support for a broad range of authentication protocols, including LDAP, Active Directory®, RADIUS and TACACS+
- IP-based Access Control Lists (ACL), which grant or restrict user access by IP address
- Ability to import user groups from Active Directory servers
- Proxy mode for secure access to devices through firewalls/VPNs
- "Strong" user name and password authentication

## Secure Centralized Command

### High availability

- Primary and secondary modes for automatic failover
- Geographic redundancy through primary and secondary CommandCenter Secure Gateway deployment on different subnets and/or locations
- Multiple redundancies and failover mechanisms, including hot-swap power supplies, dual Ethernet connections, ECC memory and dual hard drives
- Emergency dial-up access via built-in modem
- Support for multiple Authentication, Authorization and Accounting (AAA) servers for failover
- Appliance architecture running on embedded Linux

### Ease of management

- Consolidated views of all devices and targets by physical or logical topology
- Customizable device views that can be defined by target, OS, appliance type, site, group, user-defined fields or any combination of categories
- Configuration wizard to create policies
- Raritan appliance discovery with device availability status, health updates and alarms
- Comprehensive reporting to create canned and customized reports on device and user data
- Ability to back up and restore configurations of Raritan devices
- SNMP traps/event support to forward critical alerts to SNMP Manager (i.e. HP OpenView)
- Syslog integration
- Validation of supported Raritan firmware versions
- Pre-loaded firmware of all Raritan devices for easy upgrade

### Scalable and flexible access

- Multi-Platform Client provides access via multiple browsers (Internet Explorer, Mozilla™, Firefox, Netscape®) running on Windows® and Linux®
- Optional thick-client application for non-browser access
- Ability to add multiple iLO/RILOE devices under CommandCenter Secure Gateway management
- Scales to thousands of KX101 units across numerous sites with an enterprise-class KVM-over-IP in a palm-size form factor

