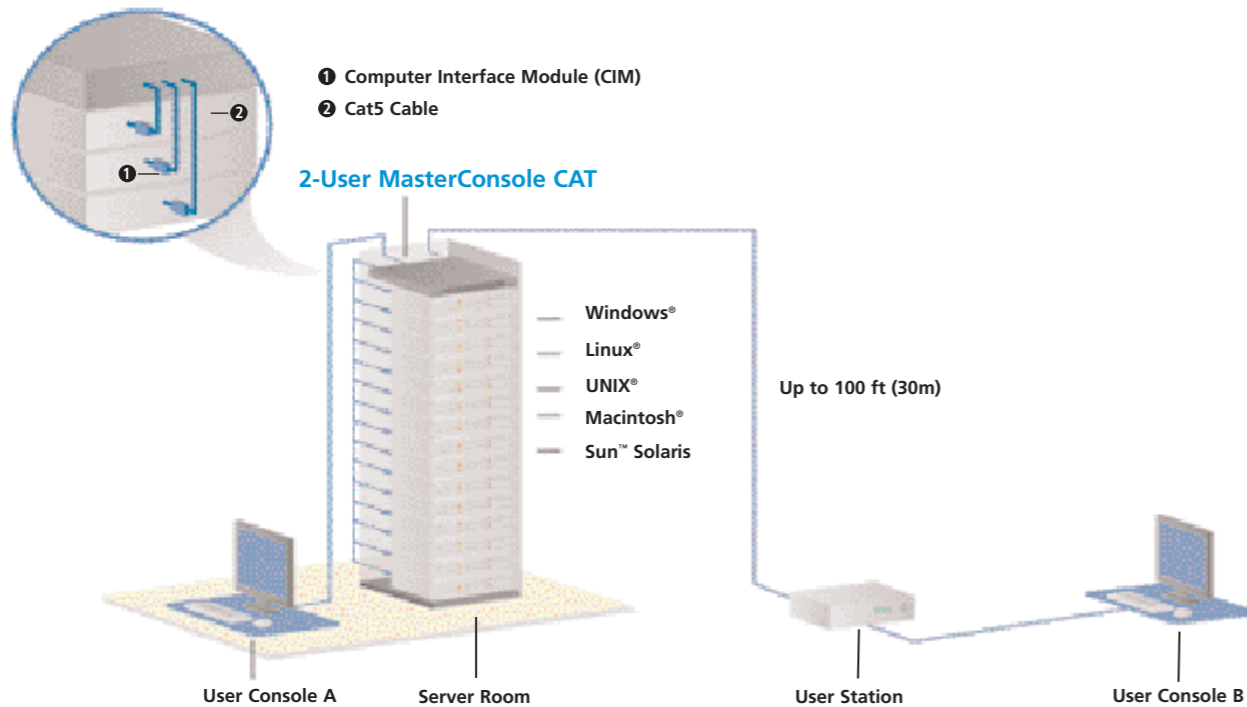
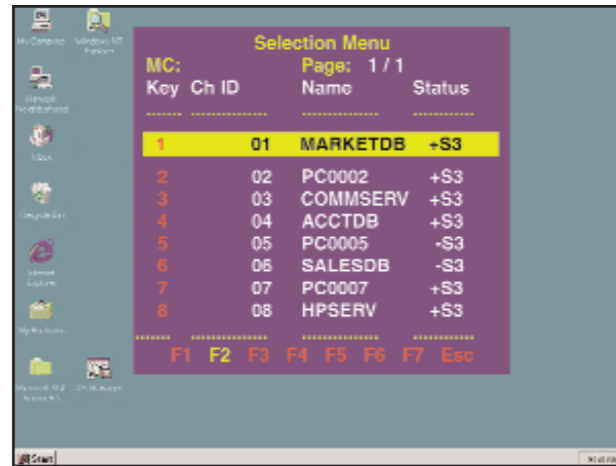


On-screen user interface makes server management easy.



MasterConsole CAT

Great KVM performance plus four models to choose from

- MCCAT18: single user, for up to 8 servers
- MCCAT116: single user, for up to 16 servers
- MCCAT28: dual user, for up to 8 servers
- MCCAT216: dual user, for up to 16 servers

Take control of your servers with our simple yet full-featured Cat5 KVM switch.

Reclaim precious space while you boost productivity

If your small to midsize server room or data center is getting too cluttered, consolidate your equipment with a Raritan MasterConsole CAT Cat5 KVM switch.

This switch lets you eliminate costly, redundant equipment by giving up to two users centralized control from a single work station. Individual models control up to eight or 16 servers, and switches can be cascaded to control up to 256 servers at distances of up to 45 meters.

Our MasterConsole CAT Switch:

- ▶ Works with every leading server – Microsoft Windows® NT, Windows Me, Windows 2000, Windows XP, Windows 2003, Windows Vista, Novell® NetWare, UNIX®, Linux®, Mac® and Sun™ (1)
- ▶ Uses Cat5/6 cables, saving you space and allowing easier cabling
- ▶ With the two-user MasterConsole CAT unit, the second user can be located up to 30 meters away from the KVM switch, enabling “lights out” access to the server room

With these features and more, MasterConsole CAT is the ideal solution for maintenance, administration, running GUI applications, troubleshooting – even rebooting your mission-critical servers.

(1) Mac and Sun supported by 2-user models only

Bulletproof reliability and performance

MasterConsole CAT is engineered for dependability:

- ▶ It features a dedicated, intelligent processor at each port so each connected server “sees” its own keyboard and mouse, preventing lockups
- ▶ Our unique “keep-alive” design ensures nonstop server operation in case of power loss to the switch
- ▶ It supports high-resolution video – up to 1600 x 1200
- ▶ It ensures authorized access via password security

Leading-edge technology and scalability

MasterConsole CAT is designed for flexibility:

- ▶ MasterConsole CAT allows server selection from the front panel channel buttons and by name from pop-up, on-screen menus
- ▶ Allows you to store multiple user names and profiles
- ▶ Provides on-site, flash firmware upgrades
- ▶ Can be cascaded to control up to 256 servers at distances of up to 45 meters
- ▶ The two-user model supports a user station that can be placed outside the server room (up to 30 meters away from the switch) for lights-out access
- ▶ Plus AutoSkip bypasses inactive channels, and AutoScan scans servers at variable rates

Ready to manage smarter? Do it with Raritan's MasterConsole CAT.

Call +31 (0)10 284 4040 or visit Raritan.eu/masterconsole-cat

Raritan is a leading provider of secure IT infrastructure management solutions that provide IT directors, managers and administrators the control they need to increase data center productivity, enhance branch office operations and increase overall power management efficiency. In over 50,000 locations around the world, our integrated secure in-band and out-of-band server access, control and power management products help companies better monitor and manage server access, utilization and energy consumption. Our intelligent PDUs offer remote power control and monitoring at the rack-and-device level, empowering data center owners with information to improve uptime and capacity planning, and efficiently utilize energy to save power and money. Raritan's OEM division provides embedded hardware and firmware for server and client management, including KVM over IP, IPMI, intelligent power management and other industry standards-based management applications. Raritan has 38 offices worldwide, serving 76 countries. The European head office is located in The Netherlands. For more information, please visit Raritan.eu.

©2008 Raritan Inc. All rights reserved. Raritan® and MasterConsole® are registered trademarks of Raritan Inc. or its wholly-owned subsidiaries. All others are registered trademarks or trademarks of their respective owners. Specifications are subject to change without notice.

Specifications

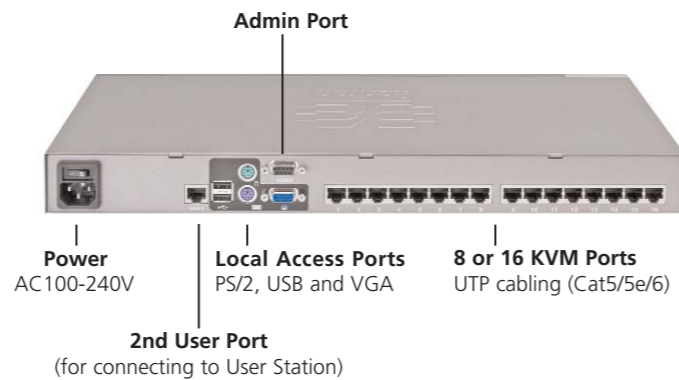
MasterConsole® CAT Main Units				
Part Number	MCCAT18	MCCAT116	MCCAT28	MCCAT216
Description	Single user, eight-port Cat5 KVM switch	Single user, sixteen-port Cat5 KVM switch	Dual user, eight-port Cat5 KVM switch	Dual user, sixteen-port Cat5 KVM switch
Users	1	1	2	2
Ports	8	16	8	16
User Ports	VGA - HDB-15 (F) x 1 (Blue) Keyboard - PS/2 mini-din 6-pin x 1 Mouse - PS/2 mini-din 6-pin x 1 FW Upgrade - DB9 (F) x 1	VGA - HDB-15 (F) x 1 (Blue) Keyboard - PS/2 mini-din 6-pin x 1 Mouse - PS/2 mini-din 6-pin x 1 FW Upgrade - DB9 (F) x 1	VGA - HDB-15 (F) x 1 (Blue) Keyboard - PS/2 mini-din 6-pin x 1 or USB Type A x 1 Mouse - PS/2 mini-din 6-pin x 1 or USB Type A x 1 FW Upgrade - DB9 (F) x 1	VGA - HDB-15 (F) x 1 (Blue) Keyboard - PS/2 mini-din 6-pin x 1 or USB Type A x 1 Mouse - PS/2 mini-din 6-pin x 1 or USB Type A x 1 FW Upgrade - DB9 (F) x 1
Max Distance Between User and Switch	50 ft (15m)	50 ft (15m)	100 ft (30m) when used with MCCAT-UST, 650 ft (195m) when used with P2-EUST (Paragon II Enhanced User Station)	100 ft (30m) when used with MCCAT-UST, 650 ft (195m) when used with P2-EUST (Paragon II Enhanced User Station)
Weight	2.45Kg	2.46Kg	2.45Kg	2.46Kg
Power	100V – 240V auto sensing 20 Watts	100V – 240V auto sensing 20 Watts	100V – 240V auto sensing 20 Watts	100V – 240V auto sensing 20 Watts
Dimensions	17.32" x 6.57" x 1.69" 440mm x 167mm x 43mm	17.32" x 6.57" x 1.69" 440mm x 167mm x 43mm	17.32" x 6.57" x 1.69" 440mm x 167mm x 43mm	17.32" x 6.57" x 1.69" 440mm x 167mm x 43mm
Video Resolution	1600 x 1200 @ 60Hz up to 100 ft (30m), 1280 x 1024 @ 75Hz up to 150 ft (45m)	1600 x 1200 @ 60Hz up to 100 ft (30m), 1280 x 1024 @ 75Hz up to 150 ft (45m)	1600 x 1200 @ 60Hz up to 100 ft (30m), 1280 x 1024 @ 75Hz up to 150 ft (45m), 1600 x 1200 @ 85Hz up to 650 ft (195m) thru P2-EUST	1600 x 1200 @ 60Hz up to 100 ft (30m), 1280 x 1024 @ 75Hz up to 150 ft (45m), 1600 x 1200 @ 85Hz up to 650 ft (195m) thru P2-EUST
Supported Platforms	MS-DOS, Windows 2000/2003/NT/Me/XP/Vista, Linux (Red Hat, Novell Suse) and SCO UNIX	MS-DOS, Windows 2000/2003/NT/Me/XP/Vista, Linux (Red Hat, Novell Suse) and SCO UNIX	MS-DOS, Windows 2000/2003/NT/Me/XP/Vista, Linux (Red Hat, Novell Suse), SCO UNIX, Mac OS9/OSX and Sun™ Solaris	MS-DOS, Windows 2000/2003/NT/Me/XP/Vista, Linux (Red Hat, Novell Suse), SCO UNIX, Mac OS9/OSX and Sun™ Solaris

MCCAT216 Front View



Power LED

MCCAT216 Rear View



Admin Port

Power AC 100-240V

Local Access Ports PS/2, USB and VGA

8 or 16 KVM Ports UTP cabling (Cat5/5e/6)

2nd User Port (for connecting to User Station)

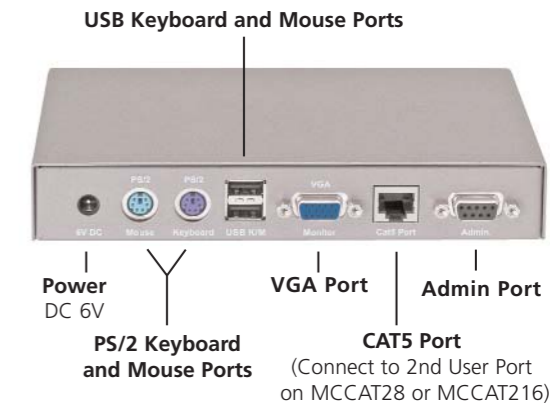
MasterConsole CAT User Station	
Part Number	MCCAT-UST
Supported Switches	MCCAT28, MCCAT216
User Ports	VGA - HDB-15 (F) x 1 (Blue) Keyboard - PS/2 mini-din 6-pin x 1 or USB Type A x 1 Mouse - PS/2 mini-din 6-pin x 1 or USB Type A x 1
CAT5 Port	RJ-45 x 1 FW Upgrade - DB9 (F) x 1
Dimensions	7.18" x 3.94" x 1.17", 182.6mm x 100mm x 29.8mm
Weight	540g
Power	DC 6V

MCCAT-UST Front View



Power LED

MCCAT-UST Rear View



USB Keyboard and Mouse Ports

Power DC 6V

PS/2 Keyboard and Mouse Ports

VGA Port

Admin Port

CAT5 Port (Connect to 2nd User Port on MCCAT28 or MCCAT216)

Computer Interface Modules (CIM)

Part Number	Properties	Dimensions
MCIM-PS/2	HDB 15 x 1, PS/2 mini-din 6-pin x 2	1.3" x 3.0" x 0.6", 33mm x 76mm x 15mm
MCIM-USB	HDB 15 x 1, USB Type A x 1	1.3" x 3.0" x 0.6", 33mm x 76mm x 15mm
DCIM-USBG2 (for Sun USB)	HDB 15 x 1, USB Type A x 1	1.3" x 3.0" x 0.6", 33mm x 76mm x 15mm

MCIM-PS/2



MCIM-USB



DCIM-USBG2

