



CommandCenter Secure Gateway

Centralized access and control
of your entire IT infrastructure

CC-E1

- 2U form factor
- Dual power supplies

CC-V1

- 1U form factor
- Single power supply

Virtual appliance

- Runs on VMware ESX and ESXi

CommandCenter Secure Gateway

Smart, Secure Access and Control of Centralized and Distributed IT Assets

Available as a rack-mountable hardware solution or a virtual appliance, CC-SG lets you easily consolidate access to physical and virtualized servers, intelligent PDUs and serial devices with a single, secure appliance.

Raritan's CommandCenter Secure Gateway (CC-SG) provides IT organizations with integrated, secure and simplified access and control of all technology platforms at the application, operating system and BIOS level. CC-SG helps you save significant time and money by allowing you to manage all of your servers, PDUs, routers and other devices throughout your centralized or distributed data servers from a single IP access point. Plus, it lets you monitor, diagnose and resolve infrastructure problems quickly and easily.

From small and medium server rooms to large enterprises with multiple data centers around the globe, CC-SG is relied upon worldwide for secure management of resources in a variety of settings. Its key features are designed to meet the needs of today's IT administrators:

- ▶ Secure, single sign on to a single IP address for managing all of Raritan's Dominion® series KVM and intelligent PDU solutions
- ▶ Single point of access to physical servers (including blade systems and servers), virtual machines and VMware® infrastructure such as the ESX/ESXi server and vCenter™ environments
- ▶ Centralized, role-based, user access policy management
- ▶ Flexible client options, including the HTML Access Client interface, Administration Client – and Mobile KVM Client for convenient server access and management of servers and PDUs from a smartphone or tablet PC
- ▶ Supports remote access and power control through service processors and IP tools – including HP® iLO/2/3, Dell® DRAC, IBM® RSA II and IMM, IMPI, RDP, VNC, SSH and Telnet, as well as Web browser applications
- ▶ Virtual media support
- ▶ Consolidated audit trail, including detailed activity reports

Both CC-SG configurations integrate with Raritan's Power IQ™ to control the power of devices managed by Power IQ. And easy CC-SG/Power IQ synchronization significantly reduces data administration.

Intuitive menus and easy reporting

- ▶ The simple and intuitive "node view" allows users to easily identify and access any target system or device through a variety of interfaces, including in-band tools and out-of-band KVM switches
- ▶ Comprehensive reporting capabilities – everything from usage and auditing to assets and nodes

With All of the Core Features Expected of a Leader Like Raritan

Robust security

- ▶ Low security profile, Linux®-based appliance architecture
- ▶ A powerful policy management tool allows access and control based on a broad range of user-customizable criteria, including time of day, physical location, application, operating system, department and function
- ▶ Available 128-bit and 256-bit AES encryption for end-to-end node access activity through AES-enabled Dominion devices
- ▶ Support for a broad range of authentication protocols, including LDAP, Active Directory®, RADIUS and TACACS+ in addition to local authentication and authorization capabilities
- ▶ Ability to import user groups from Active Directory servers for user authentication
- ▶ Support for second factor authentication with SecurID® on RADIUS servers
- ▶ IP-based access control lists (ACL), which grant or restrict user access by IP address
- ▶ Proxy mode for secure access to devices through firewalls/VPNs
- ▶ Strong user password authentication, SAS 70 compliance for configurable amount of failed login attempts and user ID lockout parameters

CommandCenter Secure Gateway Secure, Centralized Data Center Management

Out-of-Band KVM and Serial Access



- ▶ **Raritan Dominion Solutions**
 - ▷ KX II and SX
 - Rack Mounted and Blade Servers
 - Network Devices
 - ▷ PX™ Intelligent PDU

Remote Power Control



- ▶ **Power IQ Integration**
 - ▷ Outlet-Level Control via Raritan PX and Third-Party PDUs
- ▶ **Direct Control Via Raritan PX**

Virtual Machines



VMware

In-Band Data Center Access Solutions



- | | |
|------------------|-----------------------------|
| ▶ IP Tool | ▶ Service Processors |
| ▷ RDP | ▷ iLO/iLO2 |
| ▷ VNC | ▷ DRAC |
| ▷ SSH | ▷ RSA |
| ▷ Telnet | ▷ IPMI |
| ▷ Web Browser | ▷ IMM |

Secure, Centralized Access and Control

Integrated virtualization support

- ▶ Consolidated access to physical and virtual servers, including centralized audit and reporting
- ▶ Intuitive virtualization discovery function allowing import and configuration of a virtual environment with a few simple steps, including configurable RDP, VNC or SSH application selection with single sign on capabilities
- ▶ Simple virtual machine, virtual host server and vCenter information layout with relevant data and hyperlinks allowing easy navigating in the virtualization topology
- ▶ Easy setup of KVM access or remote power control to virtual host servers and vCenter using Raritan Dominion switches and “smart” power distribution units

High availability and redundancy

- ▶ The hardware appliance delivers simple redundancy through primary and secondary CommandCenter Secure Gateway deployment on different subnets and/or geographical locations. If deploying the virtual appliance, use VMware’s High Availability for easy failover setup
- ▶ CC-SG “Neighborhood” configuration allows for a collection of up to 10 CC-SG units, deployed and working together to serve the access and control needs of the enterprise. Improves performance by distributing device and node access across multiple CC-SG appliances within a data center, across regions or organizationally. Combines with a primary/backup implementation for further redundancy
- ▶ Hot-swappable RAID memory setup, dual hard drives and dual power supplies

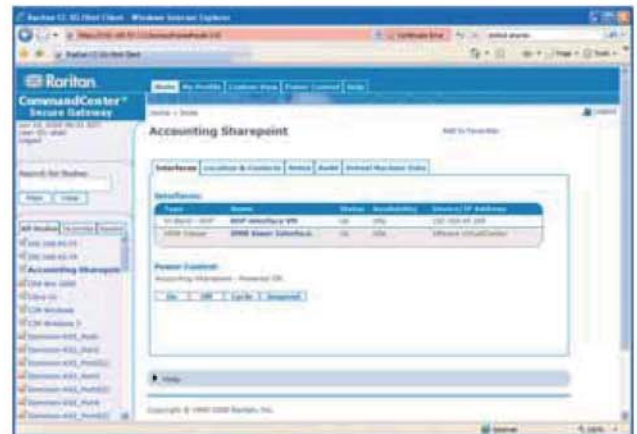
Ease of management for IT administrators

- ▶ Easy import/export feature enables convenient entry of system profile data, such as categories and elements, nodes and interfaces and user/user groups
- ▶ Guided setup of user group and security policies
- ▶ Back up, copy and restore Raritan device configurations
- ▶ Syslog integration
- ▶ SNMP TRAPS/event support
- ▶ Raritan KVM, serial and power device discovery with device availability status, health updates and alarms for Dominion series, Paragon and IP-Reach®
- ▶ Easily configure individual user access policies to Universal Virtual Media™ on supported devices

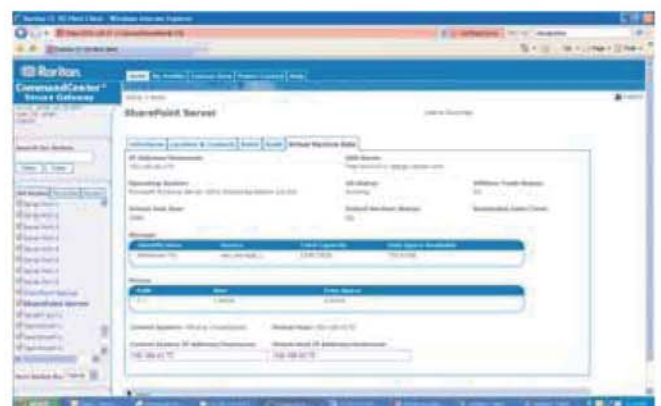
- ▶ Central storage of firmware for Raritan KVM and serial switches for upgrading devices through the centralized and automated upgrade manager function
- ▶ Task manager and notification manager to schedule tasks and review status and results

Ease of management for users

- ▶ Intuitive and simplified view allowing for both node access and power control from one screen
- ▶ Highly customizable views
- ▶ Secure chat feature allows users to troubleshoot problems collaboratively
- ▶ Intuitive, feature-rich HTML client
- ▶ Security hardened



Stay connected to virtual servers even when they are moved from one virtual host to another. Issue on, off, cycle or suspend virtual power commands using the control buttons.



Key information, such as network, storage and allocated resource, is displayed for each virtual machine. Additionally, one-click hyperlink is available to view and connect to the virtual host and control system managing this virtual machine

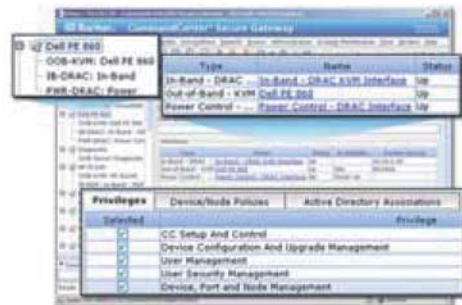
Hardware Specifications



CC-SG E1

| Features | V1 | E1 |
|----------------------------------|--|---|
| Form Factor | 1U | 2U |
| Dimensions (DxWxH) | 440 x 615 x 44 mm | 440 x 699 x 89 mm |
| Weight | 10.8 kg | 20 kg |
| Power | Single Supply (1 x 300 watt) | Dual Supply (2 x 500 watt) |
| Operating Temperature | 10° - 35° C | 10° - 40° C |
| Mean Time Between Failure (MTBF) | 38,269 hours | 53,564 hours |
| KVM Admin Port | DB15 + PS/2 or USB Keyboard/Mouse | DB15 + PS/2 or USB Keyboard/Mouse |
| Serial Admin Port | DB9 | DB9 |
| Console Port | 2 x USB 2.0 Ports | 2 x USB 2.0 Ports |
| Hardware | | |
| Processor | Intel® Core™ 2 Duo E8400 | Intel Xeon® X3360 |
| Memory | 4 GB | 8 GB |
| Network Interfaces | (2) 10/100/1000 Eth. (RJ45) | (2) 10/100/1000 Eth. (RJ45) |
| Hard Disk & Controller | (2) 80 GB SATA @ 7,200 rpm, RAID 1 | (2) 300 GB SATA @ 10,000 rpm, RAID 1 |
| CD-ROM Drive | DVD-ROM | DVD-ROM |
| Remote Connection | | |
| Protocols | TCP/IP, UDP, RADIUS, LDAP, TACACS+, SNMP, SNTP, HTTP, HTTPS | |
| Warranty | Two years. In addition Raritan offers two years extended warranty. | |

One view of the entire enterprise



- Simplified, one-click access
- Consolidated access and power control on a single screen
- Sophisticated policy management with granular privileges

Scalable and flexible access

- ▶ In-band access methods like RDP, VNC, Telnet and SSH
- ▶ Web browser interface
- ▶ SSH support for CLI access to serial targets connected to Dominion SX and KSX II

Virtual machine requirements

- ▶ ESX/ESXi 4.0 or 4.1
- ▶ 2 GB memory
- ▶ 40 GB disk space
- ▶ VMware High Availability for appliance failover

Ready to manage smarter? Do it with CommandCenter Secure Gateway.