



PDU AGENT MANAGEMENT SOFTWARE



PRODUCT OVERVIEW

Application

PDU Agent is a free-of-charge software application designed to monitor iPower PDU infrastructure remotely.

Once installed, PDU Agent can monitor up to 50 IP addresses, with each IP address capable of gathering information from up to 32 iPower PDUs.

The software is divided into three main sections:

View

The view menu provides four options:

- **PDU Server View and Search** - Displays the PDU SNMP Server overview window which is where PDUs can be added, and shows the total energy usage across all PDU servers.
- **Agent Information** - This displays the Agent Information window that shows specific information about an individual PDU.
- **Graphs** - Opens the Graph View window that allows historical data to be displayed.
- **Log Viewer** - Shows a user history data trail of who has logged in and what actions have been carried out.

Tools

The Tools section is where most of the setting up is carried out.

- **Security Setup** - In this section users can be added, edited or removed.
- **PDU SNMP Agent Setup** - Enables descriptions, parameters, event logs, SNMP settings, current and kW value alarms to be set as well as cost per unit.
- **Email Setup** - Enables the alarm email server to be configured.

Security

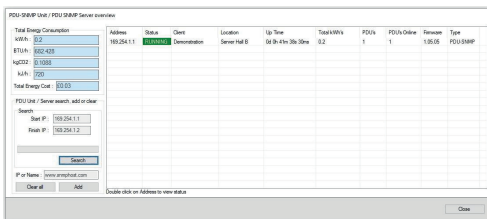
Enables users to Login, Change User or Logout.



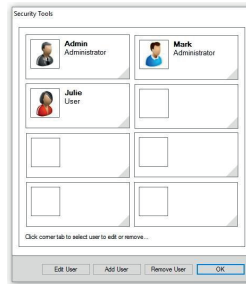
Features & Benefits

- Software to remotely monitor iPower PDU infrastructure.
- The software is available free-of-charge.
- PDU Agent can monitor up to 50 IP addresses, with each IP address capable of gathering information from up to 32 iPower PDUs.
- Designed to run on Microsoft Windows.
- Review historical power data to help identify areas where energy efficiency improvements can be implemented.
- Lists PDUs by name and provides information including status which can be Online, Offline, Disabled or Alarm, energy delivered in kWh's, Amps, Number of ports, Modbus address and Firmware version.
- Interrogate an individual PDU simply by double clicking its name.

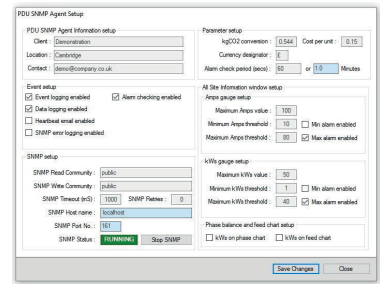
SCREENSHOTS



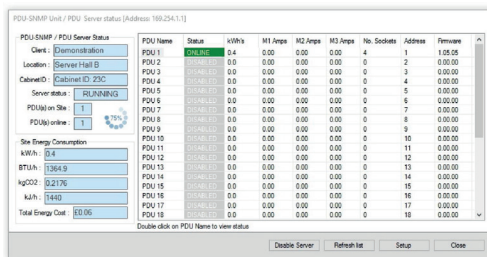
PDU SNMP Server Overview



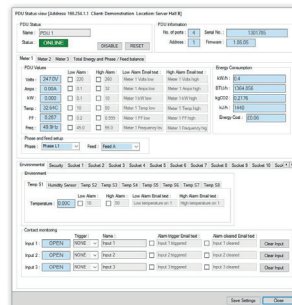
Security Tools



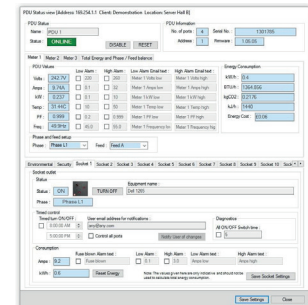
PDU SNMP Agent Setup



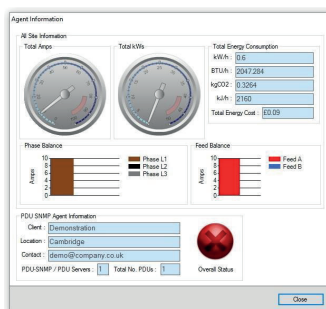
PDU Server Status



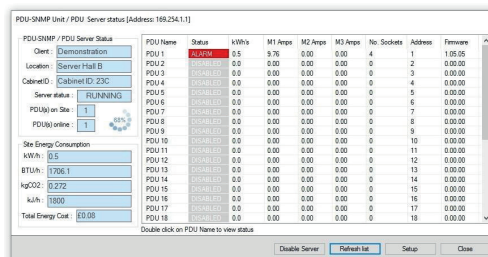
PDU Status View (Environmental)



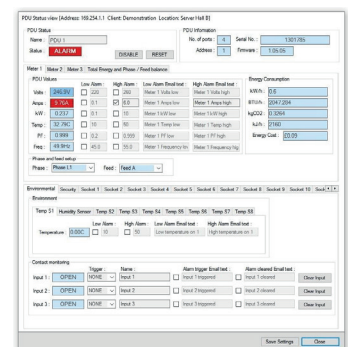
PDU Server Status (Socket)



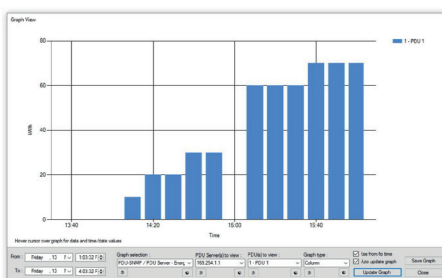
Agent Information



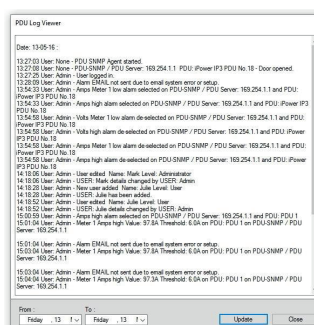
PDU Server Status (Alarm Status)



PDU Server Status (Alarm Status)



Graph View



PDU Log Viewer

Ver: EDPIPPA0723.1

Tel: 01376 510337 - E-mail: sales@edpeurope.com