

PRODUCT OVERVIEW



Features

- MTP® Pro connector offering in-field gender and polarity change*
- CPR B2ca-S1a, d0, a1 rated cable
- State-of-the-art MTP® Elite low-loss connectors
- Colour-coded for easy fibre type identification
- High precision guide pins for better alignment and performance
- Integrated push-pull functionality for ease of mating and reduced insertion and extraction force

*MTP® Pro tool and pin exchangers required

Technical Data

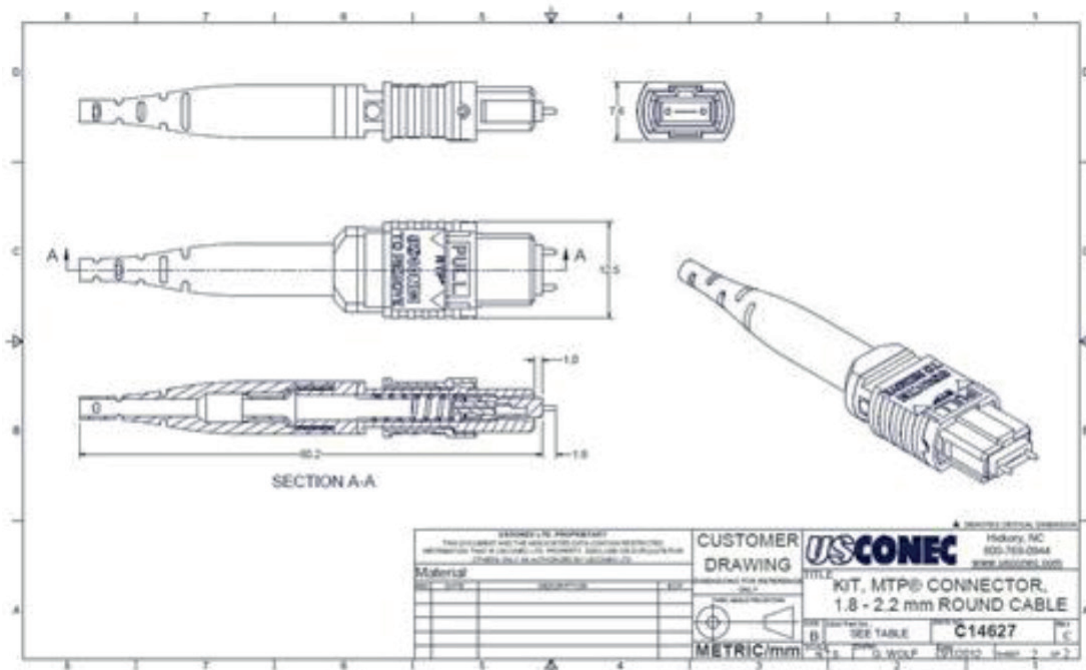
| | |
|-----------------------------------|---|
| General Data | |
| General type | Base-12 MTP Pro-MTP Pro jumper cables 4.0mm,OM4 |
| Operating temperature | -25°C up to 70°C |
| Polarity | B |
| UL Rating | UL94 V-0 |
| RoHS guidelines 2001/65/EU | Yes |
| REACH compliant | Yes |

| | |
|--------------------|---|
| Cable | |
| Cable Type | Optipack Double Jacket Cable with 12 Fibres |
| Fibre Count | 12 |
| Fibre Type | Multimode 50/125 OM4 |
| Diameter | Ø4mm outer / Ø2mm inner |
| Jacket Type | Flame retardant (LSFH) |
| CPR Rating | B2ca-s1a, d0, a1 |



| Connectors | Left | Right |
|-------------------------------|------------------------------------|-------|
| Amount of Fibre | 12 | |
| Gender | Male | |
| Ferrule Type | PC | |
| Connector Interface Standards | IEC 617547-7, TIA 604-5 - Type MPO | |
| Insertion loss max (dB) | 0.35 | |
| Insertion loss typical (dB) | 0.10 | |
| Return loss (dB) | >30 | |
| (Min. mating cycles) | 100 | |
| Tensile load | 50 N | |

Technical Drawing Connector



Ver: EDPHSMTPPMMB0723.1