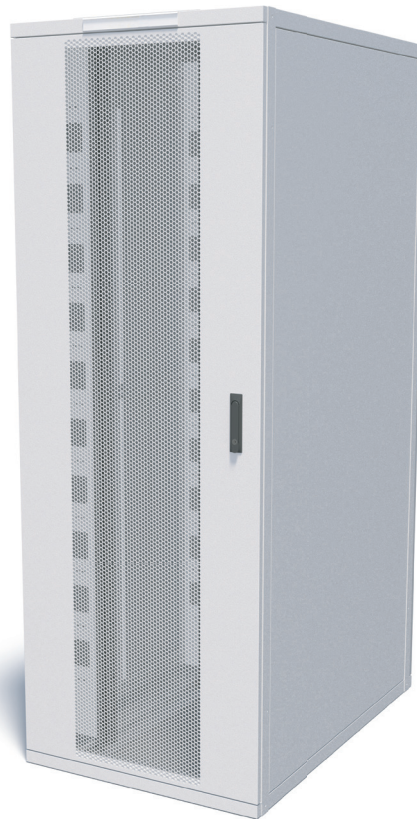
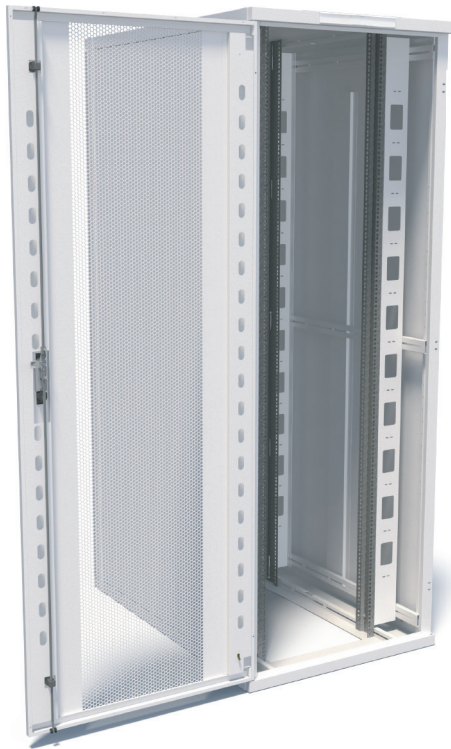


EDP DC SERVER RACK

DATA CENTRE SERVER RACK

PRODUCT OVERVIEW



Features & Benefits

- Racks are supplied fully assembled.
- 42U, 45U or 47U Heights as standard.
- Two widths 600mm or 800mm.
- Two depths 1000mm or 1200mm.
- Custom sizes available.
- Front & rear mesh doors 80% open area, supplied with swing handle & 3 point locking (600mm wide racks).
- 800mm wide racks supplied with vented wardrobe rear door.
- Full mesh doors are fully removable and can be hinged left or right.
- 2 Pairs of fully adjustable, numbered 19" mounting profiles.
- Side panels removable supplied with internal latching.
- Large cable aperture in base.
- Infill panels with cable aperture holes on 800mm wide racks.
- Three brushed cable entries in roof (one rear and one on each side).
- Vertical and horizontal brush air baffles surrounding front mounting frame.
- 10 way x 80A earth bar fitted in base at the rear.
- All panels & doors fully earthed.
- Cabinet powder coated white, other colours available on request.
- Wide range of optional accessories to custom configure racks.
- Conforms to the following standards:
 - IEC 60297-3
 - EIA 310-D
 - BS 3192.



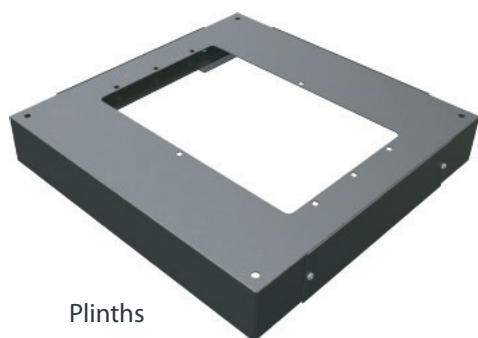
Wardrobe Doors

Accessories

- Wardrobe doors
- Vertical cable management trays (150mm/300mm wide)
- Cable management rings
- Power trays
- PDUs
- Fixed vented shelves
- Telescopic shelves
- Cantilever modem shelves
- Plinths
- Baying kits
- 42U Earthing Bars
- Fan Trays
- Roof fan trays
- Airflow baffle kits
- Other accessories available, with option for custom solutions



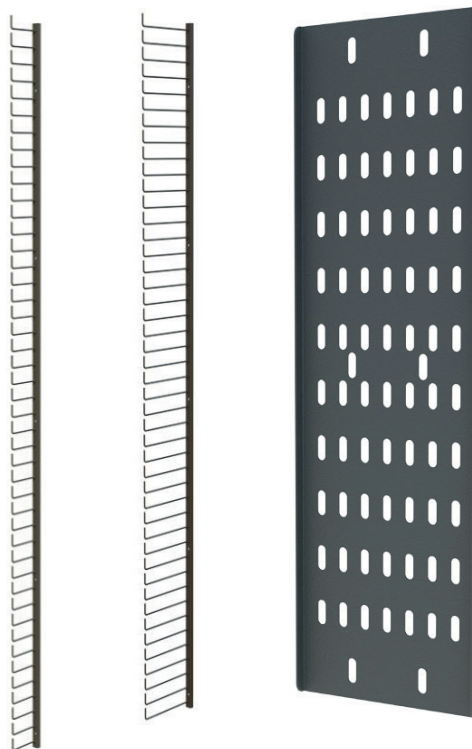
Telescopic Shelf



Plinths



Earthing Kit



Cable Management Options