

SURFACE, SURFACE L & SURFACE XL

RAISED FLOOR GROMMETS

PRODUCT OVERVIEW



KoldLok® Surface
46-2000-2020



KoldLok® Surface L
46-2000-2030



KoldLok® Surface XL
46-2000-2040

Application

Designed to seal a variety of existing raised floor tile cut-outs and allow flexibility of removing tiles without capturing cables. Surface L and Surface XL allow for larger sealing capacities.

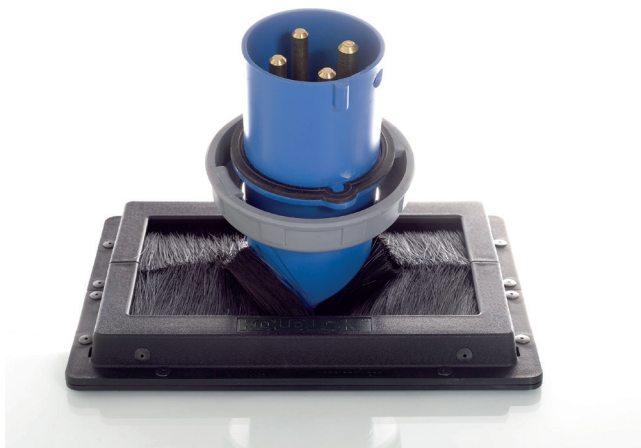
Based on measurements at multiple Data Centres, on average 60% of valuable conditioned air is not reaching the air intake of IT equipment due to unsealed floor openings. This lost air, known as bypass airflow, contributes to IT equipment hotspots, cooling unit inefficiencies, and increasing infrastructure costs. KoldLok® products specifically address bypass airflow and its detrimental effects on Data Centre cooling.

Features

- The Surface Mount Grommets facilitate re-cabling and allows tiles to be moved without capturing cables.
- Surface L and Surface XL supplied with metal plates for sealing larger openings.
- The Grommets contain no loose or partially fastened parts, which can become separated or fall through the raised floor.
- The Grommets are impact resistant and durable.
- KoldLok® products are compliant with Directive 2002/95/EC of the European Parliament and the Council on the Restriction of the Use of Certain Hazardous Substances in Electrical and Electronic Equipment (RoHS).

Benefits

- Increases existing cooling unit capacity.
- Reduces the need to purchase additional cooling units.
- Improves equipment reliability and extends equipment life.
- Increases static pressure under the raised floor and improves cool air delivery through perforated tiles and floor grate.
- Facilitates Cold Aisle / Hot Aisle best practices.



Specifications

Description	Millimeters	Inches
Surface overall size (W x D x H)	279 x 210 x 29	11 x 8¼ x 1⅛
Product height above the raised floor	32	1¼*
Maximum cutout size sealed	254 x 184	10 x 7¼
Usable cable area	210 x 102	8¼ x 4
Surface L overall size (W x D x H)	305 x 298 x 33	12 x 11¾ x 1⅙
Product height above the raised floor	37	1⅞*
Maximum cutout size sealed	254 x 248	10 x 9¾
Usable cable area	210 x 102	8¼ x 4
Surface XL overall size (W x D x H)	305 x 381 x 33	12 x 15 x 1⅙
Product height above the raised floor	37	1⅞*
Maximum cutout size sealed	254 x 330	10 x 13
Usable cable area	210 x 102	8¼ x 4

* with mounting system installed

Patented Sealing System

(U.S. Patent No. RE41863 and International Patents Pending) Multi-layer, opposing and interwoven filaments consisting of:

- 0.010 inch diameter upper filament.
- 0.020 inch diameter lower filament.
- Approximately 25,000 filaments per Grommet.
- Premium grade nylon Type 6 ensuring flexibility and self-sealing recovery.
- Ensure passage of 100 amp power connectors.

Sealing Effectiveness

- Effective bypass airflow sealing in areas undisturbed by cable penetrations at static pressures up to 0.10 inches of water column.
- Effective bypass airflow sealing with four ½ inch cables penetrating the Grommet at a static pressure of 0.10 inches.

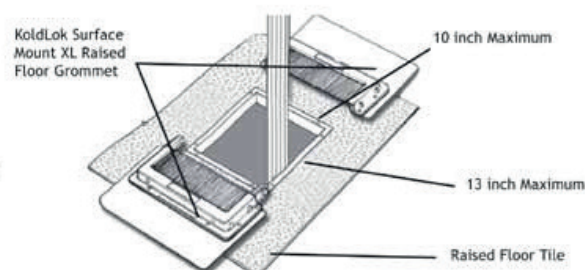
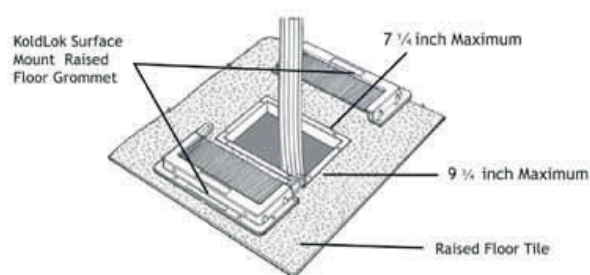
Grommet Frame

The frame is moulded from durable polypropylene. The frame consists of two, interlocking halves. Finish: Black.

Floor Mounting System

Custom adhesive mounting kit consisting of:

- Single-sided, pressure sensitive foam with adhesive backing.
- Double-sided, pressure sensitive foam with adhesive backing.
- All foam components are non-particulating.



Ver: EDPKLS0623.1