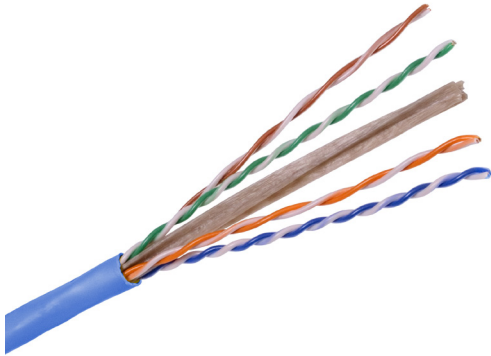


CPR Compliant Cat6 U/UTP Cable



- Euroclass B2ca-s1a-d2-a1
- Sweep Tested from 1-350MHz
- Flexible Cable Construction for Ease of Installation
- RoHS Compliant, Flame-Retardant Cable Design

Hubbell SPEEDCHANNEL Category 6 cable provides considerable margin above all electrical transmission performance requirements specified in ANSI/TIA-568-C.2 and ISO/IEC 11801 (2nd Edition) standards.

Hubbell Premise Wiring high-performance connectivity (jacks, panels, cords, blocks) was designed to mate with SPEEDCHANNEL Category 6 premium cable creating a cabling system that provides optimum electrical performance capabilities in handling critical, high-bandwidth applications.

Features & Benefits

Features

- Category 6 and Class E component compliant.
- Designed for standard bend radius termination.
- Standard round cable design.
- Rip cord provided for easy cable preparation.

Specifications

- **Conductor:** 24AWG solid bare copper.
- **Insulation:** PE.
- **Jacket:** FRLSZH (Euroclass B2ca-s1a-d2-a1).
- **Pairing:**
 1. Blue + White/Blue
 2. Orange + White/Orange
 3. Green + White/Green
 4. Brown + White/Brown
- **NVP:** 65%.
- **Rip Cord:** Inside Cable Jacket.
- **Rated Operating Temp.:** 75°C (max).
- **Packaging:** 305m reel in a box.

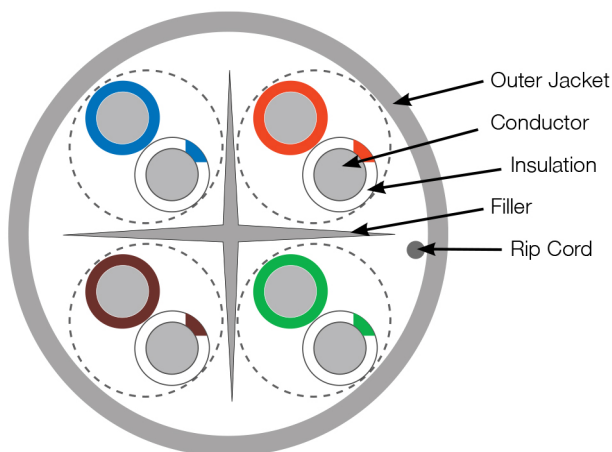
Standards / Verifications

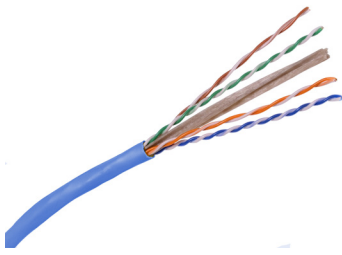
- ANSI/TIA-568-C.2 (Category 6).
- ISO/IEC 11801 Ed 2 (Class E).
- BS EN 13501-6.
- BS EN 13501-2:+A1 2009.
- BS 8429:2009.

Applications

- Ethernet 10/100/1000/10GBASE-T (IEEE 802.3an).
- Data centre, LAN and storage area cabling infrastructure.
- Power over Ethernet (PoE) applications (IEEE 802.3af, 802.3at, 802.3bt).
- Commercial, medical, government and education facilities.
- **Bandwidth intense processing:**
 - 3D modelling.
 - Broadband video.
 - On-line document publishing.

Cable Features





Part Numbers

C6SCBZFB22B*	SPEEDCHANNEL CAT6 U/UTP, 4PR/24AWG, B2ca s1a d2 a1, 305m, Blue
C6SCBZFB22GY	SPEEDCHANNEL CAT6 U/UTP, 4PR/24AWG, B2ca s1a d2 a1, 305m, Grey
C6SCBZFB22W	SPEEDCHANNEL CAT6 U/UTP, 4PR/24AWG, B2ca s1a d2 a1, 305m, White
C6SCBZFB22OR	SPEEDCHANNEL CAT6 U/UTP, 4PR/24AWG, B2ca s1a d2 a1, 305m, Orange
C6SCBZFB22V	SPEEDCHANNEL CAT6 U/UTP, 4PR/24AWG, B2ca s1a d2 a1, 305m, Violet

*Stocked colour other available to special order only.

Electrical Characteristics

Frequency (MHz)	RL (dB)	ATT (dB/100m)	NEXT (dB)	PS NEXT (dB)	ELFEXT (dB/100m)	PS ELFEXT (dB/100m)	PD (ns/100m)	Upper Characteristic Impedance Zu(Ω)	Lower Characteristic Impedance Zu(Ω)
1	20.0	2.0	74.3	72.3	67.8	64.8	570.0	-	-
4	23.0	3.8	65.3	63.3	55.8	52.8	552.0	115.2	86.8
8	24.5	5.3	60.8	58.8	49.7	46.7	546.7	112.6	88.8
10	25.0	6.0	59.3	57.3	47.8	44.8	545.4	111.9	89.4
16	25.0	7.6	56.2	54.2	43.7	40.7	543.0	111.9	89.4
20	25.0	8.5	54.8	52.8	41.8	38.8	542.0	111.9	89.4
25	24.3	9.5	53.3	51.3	39.8	36.8	541.0	112.9	88.5
31.25	23.6	10.7	51.9	49.9	37.9	34.9	540.0	114.1	87.7
62.5	21.5	15.4	47.4	45.4	31.9	28.9	538.6	118.3	84.5
100	20.1	19.8	44.3	42.3	27.8	24.8	537.6	121.9	82.0
200	18.0	29.0	39.8	37.8	21.8	18.8	536.5	128.8	77.6
250	17.3	32.8	38.3	36.3	19.8	16.8	536.3	131.5	76.0

* Cables that meet the requirements of the characteristic impedance are not required to be measured for return loss; alternately, cables that meet the return loss requirements are not required to be measured for characteristic impedance.

Ver: EDPHC6C1118.1